

NEW



SPRING 2018



THE
2-IN-1
ANTI-AGING EXPERT
CARE

endermologie cosmétique

A unique,
efficient
and adapted
care ritual



HIGH PERFORMANCE

DUAL
CARE

- ✓ To treat body areas that most reflect our age...
- ✓ With a multifunction care that **optimizes** the results of face endermologie® protocols





FOCUS ON THE LIPS

→ The lips have a very special place in the relationships between individuals.

It is both an **organ allowing the expression of emotions** and feelings, and an organ of seduction.

→ The lips **suffer the onslaught of time in every sense of the word.**

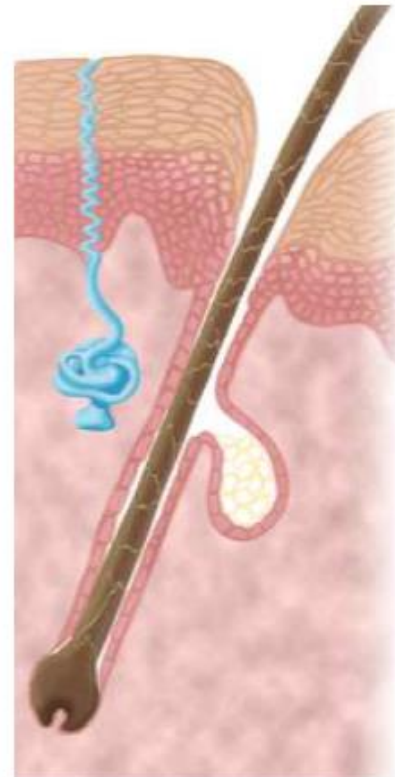
- The weather and climatic changes attack them resulting in dry and chapped lips, with peripheral redness preceding more severe states of cracks for example.

- In addition, **with age, the lips lose their capacity to adapt and, accept more difficultly the environmental constraints.**

→ The lips need special attention because it is one of the most fragile skin of the body. Naturally dry, because of the thinness of the labial skin barrier and the absence of moisturizing and relipidant glands, vermillion (or "red lip") is constantly subjected to desiccation (cracks).

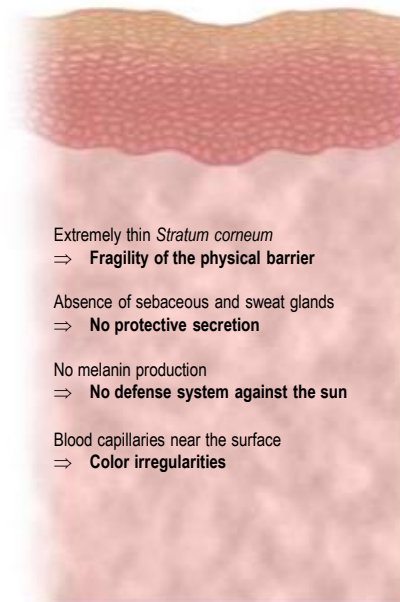
→ This body part therefore needs to be **frequently protected** to avoid cracks and microcracks that allow for the installation of an inflamed state.

Normal skin



Color irregularities

Lip skin



Extremely thin *Stratum corneum*

⇒ Fragility of the physical barrier

Absence of sebaceous and sweat glands

⇒ No protective secretion

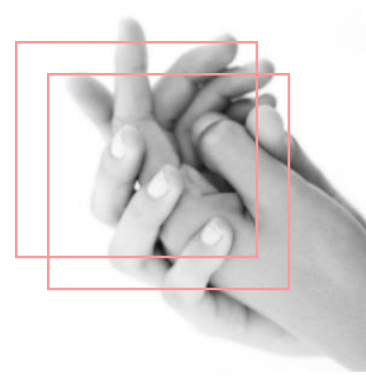
No melanin production

⇒ No defense system against the sun

Blood capillaries near the surface

⇒ Color irregularities

FOCUS ON THE HANDS



- Highly exposed, the hands quickly get a **dry aspect** over time, **brown spots** called "pigmentary" spots appear but mostly, they lose their shape and volume because of the **melting of fat tissues** and they become gnarled.
- A transformation that bothers more and more women. **One in eight*** women is more concerned with the appearance of her hands than with her face.
- The **skin of the hands** is thinner than the rest of the body's ; moreover, it is constantly attacked by the sun and detergent products.



(*Daily Mail Survey for the French Society of Dermatology)

DUAL CARE

BEAUTY OF THE HANDS & LIPS

7% LPG® Repair complex

- **Repairs** the loss of skin firmness and elasticity
- **Smooths out** lines and wrinkles
- **Rebuilds** damaged lips while eliminating cracks
- **Corrects** surface and color irregularities
- **Plumps** the skin
- **Moisturizes** intensely
- **Protects** and restores the barrier function
- **Soft skin** effect

Apply as often as needed to the **lips** and their contour, and to the **hands** and **nails**.

Ultra quick penetration for lasting comfort, without any shiny nor greasy effect.



ANTI-AGING HAND & LIP CREAM



Tube 40ml

ACTIFS

7% LPG Repair complex

ACTIONS

- **Protects, repairs and hydrates intensely**
- **Corrects surface and color irregularities**
- **Smooths and replumps the skin**
- **Soft skin effect**

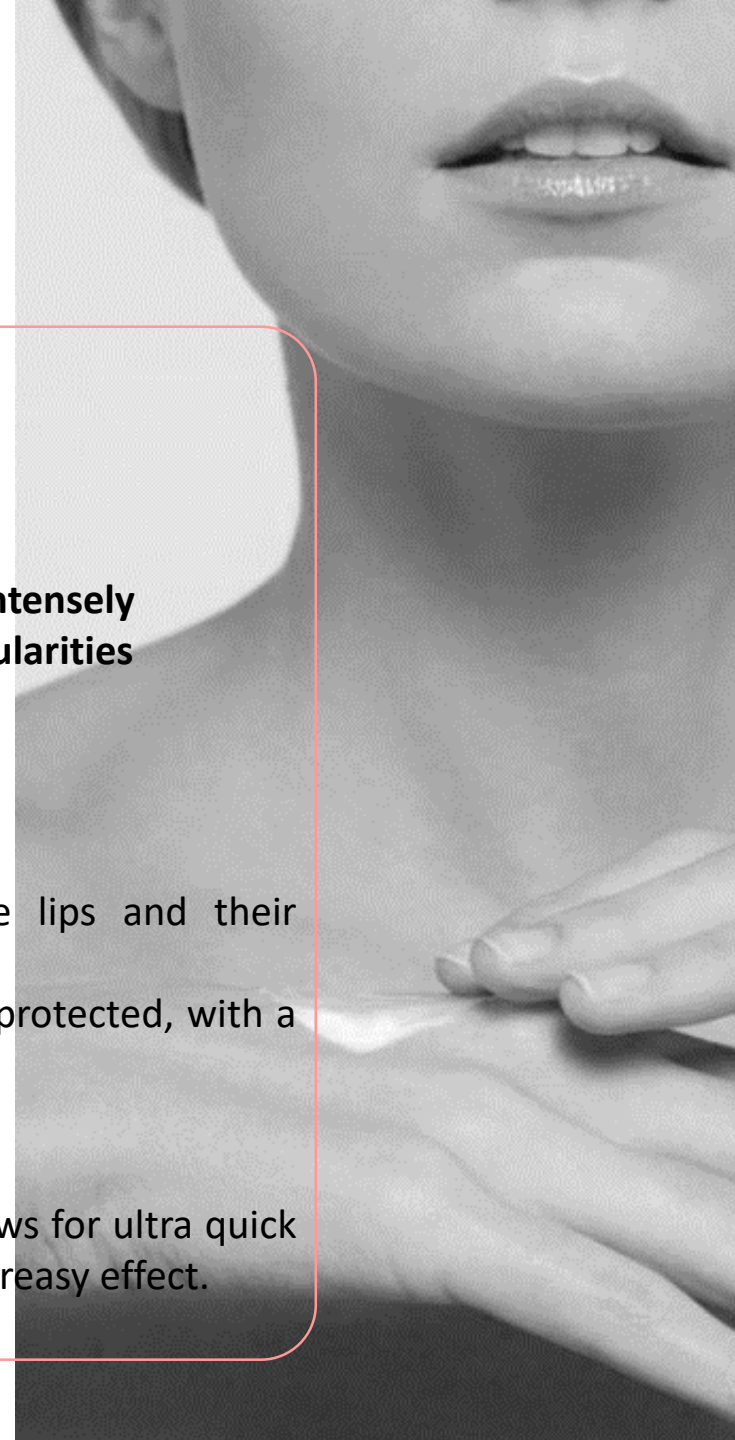
UTILISATION

Apply as often as needed to the lips and their contour, and to the hands and nails. The skin is repaired, smoothed and protected, with a lasting feeling of comfort.

TEXTURE

Its soft and thin creamy texture allows for ultra quick penetration, without any shiny nor greasy effect.

Sans parabènes & sans phénoxyéthanol






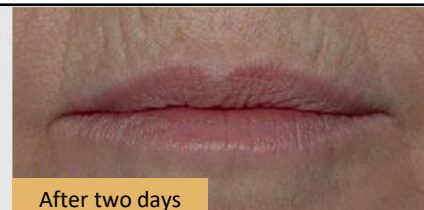
7% LPG REPAIR COMPLEX



Quality of highly-refined and unsaponifiable-rich **organic shea butter** (origin: shea nuts). The benefits of shea butter come in large part from its high content of unsaponifiable components*.

- Repairs damaged lips
- Enhances and makes the lips feel comfortable, soft and evenly pink
- Soothes inflammation and rebuilds the integrity of the lips.
- By strengthening the epidermis and restoring the barrier function, this active ingredient improves hydration and removes cracks on the surface of the lips

Corrects surface and color irregularities

	
<p>Softness +17% up to +56% Color uniformity..... +19% up to +52%</p>	
	

SELF-ASSESSMENT:
 In only two days, it embellishes and provides extreme comfort to the lips: the feeling of tightness is reduced for all volunteers

SEDERMA study: in VIVO Test / 45 female volunteers (average age = 46) with chapped and inflamed lips, who applied it at least twice a day for 2 weeks

**Finished products formulated with the Natural Grade Shea Unsaponifiable™ allow to not weigh down the cream with a quantity of triglycerides.*

7% LPG REPAIR COMPLEX



Anti-senescence **organic** active ingredient (Plantago lanceolata)

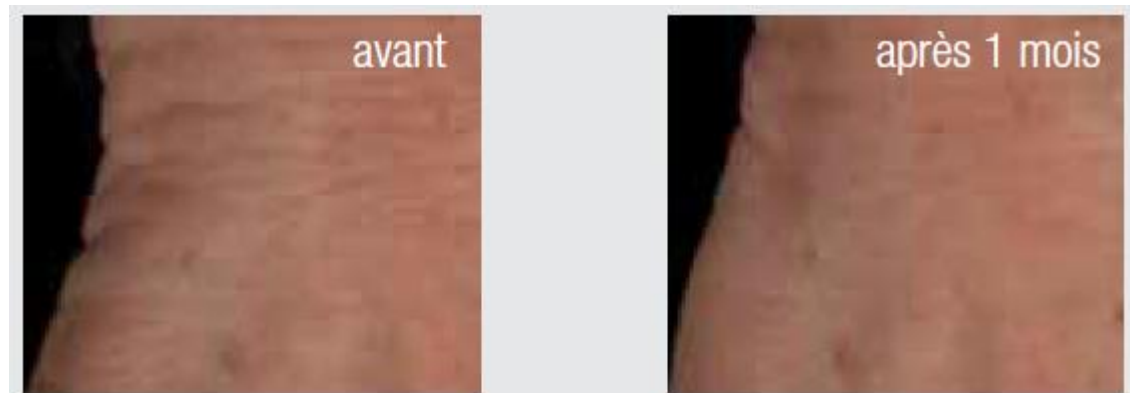
Origin: Perennial plant with oval, lance-shaped and ribbed leaves. Naturally growing in Eurasia, Plantain adapts easily and is established on all continents. One of the most recommended herbs in history, Plantain was used in ancient times to treat headaches and as an antidote for venoms. Recent studies have confirmed its healing and anti-inflammatory properties.

- **Visibly reduces the signs of senescence**
- **Improves the viscoelastic properties of the skin and brightens senescent pigmentary spots**
- **Limits the overproduction of melanin by soothing and strengthening the melanocytes' environment.**

On the hands* :

- After one month only, this active ingredient repairs the loss of skin firmness and elasticity.

- After two months, the thickness and density of the skin increase, corresponding to a gain in age of 6 years. The skin is smoothed (+ 11%) and looks replumped up. The pigmentation of the spots is visibly more reduced than basal pigmentation.



- Firmness +30,9%,
- Elasticity +22,6%,

**Sederma / in Vivo Test: 56 female volunteers (average age = 62.5, from 52 to 75), with visible signs of aging (sagging skin and senescence spots) applied it twice a day for 2 months on the back of the hand vs placebo.*

7% LPG REPAIR COMPLEX



100% natural, purified **white beeswax**:

- **Moisturizing and protective properties** (rich in **vitamin A**).
- It forms a waterproof protective film on the skin that protects it from **external aggressions** and from **drying out**.
- Particularly effective to soften, smooth and moisturize the skin.
- It works like a second skin and reinforces the natural protective barrier of the skin.
- It brings long-lasting comfort and a velvety touch